

## Key Information

Tuesday 20th January —Peter Pan Performance (morning only)

Wednesday 11th February—Wear red or pink in exchange for cakes

Friday 13th February —Animal dress up day (nursery only)

Friday 13th February - Last day of term

Please look out for further key dates in the Weekly Update email sent by the class teacher.

### A few notes from the nursery staff...

1. Ensure you send your child to nursery with appropriate clothing—we explore the outdoors in ALL weathers and we know how quickly British weather can change!
2. PLEASE label all of your children's belongings including their clothing.
3. No jewellery should be worn to school. one pair of close-fitting gold or silver studs may be worn. Children may also wear their Sikh Kara bangle.
4. There is no need to pack a snack for your child, as we provide fruit and milk/water.
5. Please make sure all pack lunches are healthy and **do not** include any nuts.



## Animal Kingdom



Ladybirds Class

Miss Squires

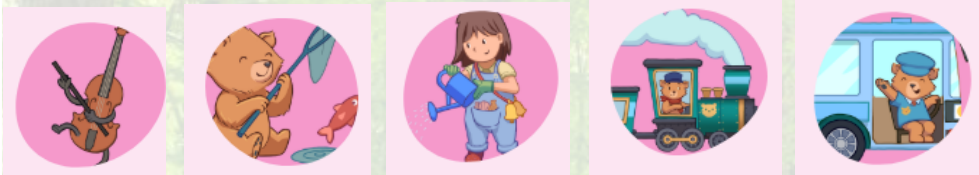


## Phonics

This term, we will continue to follow the Little Wandle Foundations scheme of work.

We will be focusing on:

- **Rhyme Time** - exploring a new nursery rhyme each week
- **Tuning into Sounds** - introducing a new sound each week
- **Love of Reading** - reading a new story each week



If you would like any help with supporting your child in Phonics, please speak to the class teacher or access the guidance for parents on the Little Wandle Letters and Sounds website.

## Mathematics

This term we will continue to explore mathematics both as a class and as part of our learning environment. Our curriculum embeds early mathematical skills, thinking and talk, through a hands-on and practical approach.



**Overall aims:**

- Comparing amounts
- Explore shapes
- Subitising
- Explore and create simple patterns
- Number names and counting
- Explore position and space

## Overall Aims

Our overall aims for **Communication and Language** are:

- To remember 'what happens' in longer stories.
- To use language to retell a simple past event in the correct order.
- To understand and follow a three key word sentence.

Our overall aims for **Personal, Social and Emotional Development** are:

- To talk about our feelings.
- To wait for our turn and show friendly behaviour to peers.
- To develop a sense of responsibility as a 'Handy Helper' in the classroom.

Our overall aims for **Physical Development** are:

### Fine Motor

- To use one-handed tools and equipment.
- To put our coats on independently.
- To make controlled marks (e.g. lines, dots, circling) using a preferred hand.

### Gross Motor

- To change direction to avoid obstacles when walking.
- To balance on a range of equipment.
- To join in with action songs.

Our overall aims for **Understanding the World** are:

- To talk about what we see, using a wide vocabulary.
- Begin to understand the need to respect and care for the natural environment and all living things.

Our overall aims for **Expressive Arts and Design** are:

- To take part in simple pretend play using props.
- To join different materials and explore different textures.
- To remember and sing entire songs (e.g. nursery rhymes).