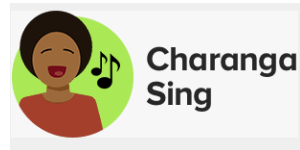


## Grammar, punctuation and spelling:

- use commas in a list
- use expanded noun phrase
- use conjunctions 'and', 'but', 'because', 'if' and 'when'
- use full stops, capital letters, exclamation marks, question marks, commas for lists and apostrophes for contracted forms and the possessive (singular).

## Music

Our Charanga topic this term focuses on the song "Head, Feet, Heart." The unit celebrates South African music. This children will be exploring rhythm, pulse and will create their own improvised pieces later in the



## PSHE—Being me in my world

We will be exploring who we are as individuals and look at our similarities and differences. We will explore how we fit into our school and community.



Being Me in My World

## PE

Our PE day is **Thursday** will include **Dodging and creating Games** lesson for Year 2. Please remember to send your child to school in the correct PE kits on this day and with earrings removed or taped with your permission.

## Art

During Term 1, we will be exploring the work of Andy Warhol. We will be designing and creating a collage using repeated patterns.



# Year 2 Term 1 Curriculum Booklet



Being Me in My World



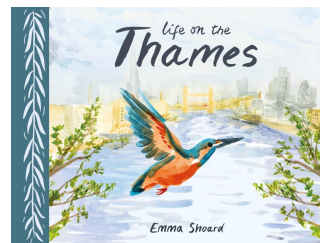
## Hedgehogs and Porcupines

Miss Costen and  
Miss Newman

## English

In Term 1, we will be looking at the book 'Life on the Thams', linking closely to our exploration of Gravesend. We will be creating:

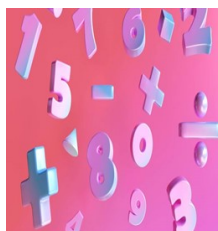
- Fact file
- Descriptive writing
- Narrative
- Leaflet about the Thames
- Poem
- Comic– journeying down the Thames.



## Mathematics

The topics from our White Rose Mathematics scheme for this term are:

- Numbers to 100: Counting in 2's, 5's and 10's
- Place value/Partitioning
- Comparing and ordering objects and numbers.
- Estimating
- Number bonds to 10 and 100.
- Adding and subtracting ones.



## Science

During Science lessons we will be looking at habitats and how they are suitable for specific animals. We will investigate how animals adapt to their habitat and what makes a good habitat for each animal.



## Basic Knowledge

This term, the children will be expected to complete addition, subtraction and place value tasks and counting in 2s, 5s and 10s.

We will also focus on our weekly spellings.

## Wider Curriculum- Geography

In Term 1, we will be exploring Gravesend and how it fits in the world. We will be comparing Gravesend UK with Gravesend USA, looking at similarities and differences. We will explore Gravesend on a map and create our own map of Gravesend.



## RE

In RE, Year 2 will be learning about **Creation: Who Made the World?**

*Children will be exploring how to:*

- Retell the story of creation from Genesis 1:1–2.3 simply.
- Recognise that 'Creation' is the beginning of the 'big story' of the Bible.
- Say what the story tells Christians about God, Creation and the world.
- Give at least one example of what Christians do to say thank you to God for the Creation.
- Think, talk and ask questions about living in an amazing world.

