

Parent communication

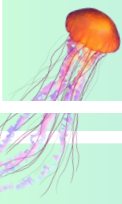
We will be sharing weekly updates via Arbor to inform you about the learning we have done during the week and to give any reminders of upcoming events.

If you have any questions regarding your child or need to discuss anything with the teachers, please email us on: receptionlearning@holytrinity-gravesend.kent.sch.uk

Behaviour policy

We focus on the positives in school and use 'house points' to promote good behaviour and achievements. Children can also receive behaviour points and golden stickers throughout the week for being model students. Each Friday, we also have a celebration assembly where children might receive an achievement award or an attitude award from Mr Jones.

We are doing a lot of work this term on emotional regulation and will use our Zen Zone in the communal corridor as a space for children to reflect on any sad choices, if it is felt necessary.



A few notes from the teachers...

1. PLEASE label all of your children's belongings including their clothing. Without a name label, we cannot guarantee that any lost clothes will make it back to you.
2. No jewellery should be worn to school. One pair of close-fitting gold or silver studs may be worn. Stud earrings will need to be removed for PE. Children may also wear their Sikh Kara bangle.
3. Please make sure all packed lunches are healthy and **do not** include any nuts.
4. When our reading books start going home in Week 3, all reading books will be given out on a Thursday and handed in the following Wednesday.



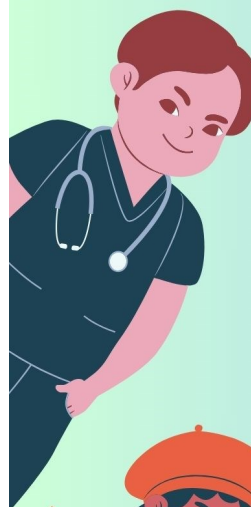
Reception - Term 1

Me and My Community



Jellyfish and Turtles Class

Miss Coulam, Mrs Hughes, Mrs Kooner and Miss Rootsey



Phonics

Phonics is a vital part of our curriculum. We follow the Little Wandle scheme of work. It builds up over the year to enable children to read and write. We cover 4 sounds a week and explore how these sounds are used in words. Please see below the sounds we will be looking at this term. **Phonics starts next week— 15th September 2025.**

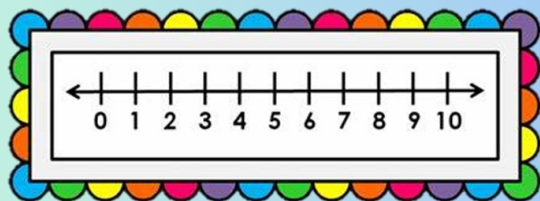
Reception Autumn 1

	Phase 2 graphemes	New tricky words
Week 1	s a t p	
Week 2	i n m d	
Week 3	g o c k	is
Week 4	ck e u r	I
Week 5	h b f l	the

If you would like any help with supporting your child in Phonics, please speak to the class teachers or watch the informative videos on the Little Wandle YouTube page: [Letters and Sounds for Home and School - YouTube](#)

Mathematics

This term we will continue to explore mathematics both as a class and as part of our learning environment. Children will be encouraged to explore new vocabulary and mathematical concepts.



Overall aims:

- Understanding number up to 5
- Cardinal value
- Matching and sorting objects
- Comparing amounts
- Subitising up to 5



Topic

Our topic this term is 'Me and My Community'. Each week we will be focusing on a different area of people who help to keep us safe. This will include: school, families, police, fire brigade, doctors, and ambulances. We also have some very exciting visitors coming into the school.

Please send us a photo of your family so we can discuss this with the children during our circle times.

RE

During term 1 our focus in Religious Education (RE) is creation. We will look at how the Bible tells the story of God creating the World. We will explore the different days and what was created on each day. We will also be discussing how we can respect our beautiful world.



PE

PE for Reception falls on a **Monday**. This term we will be focusing on simple games and moving in different ways (e.g. running, walking and jogging). We are also setting the foundations for future PE lessons—when an adult says freeze, we must stop. On Monday's children will need to come into school in their PE kit. They will spend the entire day in their kit. The PE kit consists of:

PE Uniform

PE Kit

- White round-neck T-Shirt
- Black Shorts
- Black Jogging Bottoms or Leggings
- White Socks
- Black Plimssoles (for indoor PE)
- Black Trainers (for outdoor PE)

On your child's PE day long hair must be tied back and all jewellery (including religious necklaces) is to be removed. Earrings must be removed for Health and Safety reasons. The only exception is a Sikh Kara bangle that is too small to be removed, however, this must be covered with a sweatband.