

Tapestry

We are excited to announce that Tapestry is up and active for all reception children.

We have activated the accounts using the email registered with the school. Tapestry will send you an activation link to register your account in a separate email. Once registered, you can see all the amazing learning we will be doing.

Scan the QR code to
login to your Tapestry
account and see all of
our amazing learning.



If you have any questions regarding activating your tapestry, please email us on: receptionlearning@holytrinity-gravesend.kent.sch.uk

A few notes from the teachers...

1. PLEASE label all of your children's belongings including their clothing.
2. No jewellery should be worn to school. one pair of close-fitting gold or silver studs may be worn. Stud earrings will need to be removed for PE. Children may also wear their Sikh Kara bangle.
3. Please make sure all pack lunches are healthy and **do not** include any nuts.
4. When our reading books start going home in Week 2, all reading books will be given out on a Thursday and handed in the following Wednesday.



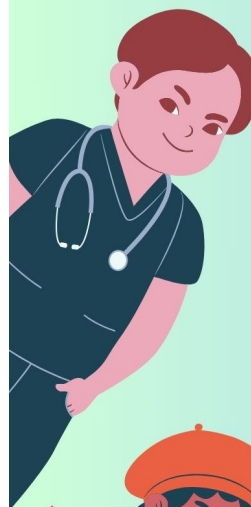
Reception – Term 1

Me and My Community



Jellyfish and Turtles Class

Miss Coulam and Mrs Hughes



Phonics

Phonics is a vital part of our curriculum. We follow the Little Wandle scheme of work. It builds up over the year to enable children to read and write. We cover 4 sounds a week and explore how these sounds are used in words. Please see below the sounds we will be looking at this term. **Phonics starts next week— 9th September 2024.**

Reception Autumn 1

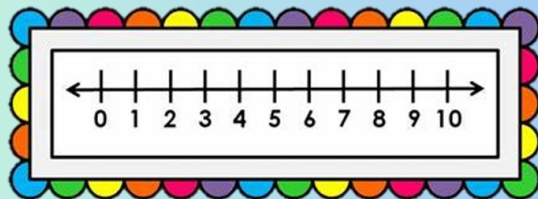
	Phase 2 graphemes	New tricky words
Week 1	s a t p	
Week 2	i n m d	
Week 3	g o c k	is
Week 4	ck e u r	I
Week 5	h b f l	the

If you would like any help with supporting your child in Phonics, please speak to the class teachers or watch the informative videos on the Little Wandle YouTube page:

[Letters and Sounds for Home and School - YouTube](#)

Mathematics

This term we will continue to explore mathematics both as a class and as part of our learning environment. Children will be encouraged to explore new vocabulary and mathematical concepts.



Overall aims:

- Matching and sorting objects
- Comparing amounts
- Comparing size mass and capacity
- Explore and create simple patterns
- Subitising

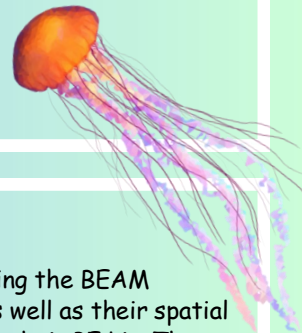


Topic

Our topic this term is 'Me and My Community'. Each week we will be focusing on a different area of people who can keep us safe. This will include: school, families, police, fire brigade, doctors, and ambulances. We also have some very exciting visitors coming into the school.

RE

During term 1 our focus in Religious Education (RE) is creation. We will look at how the Bible tells the story of God creating the World. We will explore the different days and what was created on each day. We will also be discussing how we can respect our beautiful world.



PE

PE for Reception falls on a **Thursday**. This term we will be following the BEAM programme. This encourages children's Gross motor development as well as their spatial awareness. On Thursday's children will need to come into school in their PE kit. They will spend the entire day in their kit. The PE kit consists of:

PE Uniform

PE Kit

- White round-neck T-Shirt
- Black Shorts
- Black Jogging Bottoms or Leggings
- White Socks
- Black Plimssoles (for indoor PE)
- Black Trainers (for outdoor PE)

On your child's PE day long hair must be tied back and all jewellery (including religious necklaces) is to be removed. Earrings must be removed for Health and Safety reasons. The only exception is a Sikh Kara bangle that is too small to be removed, however, this must be covered with a sweatband.